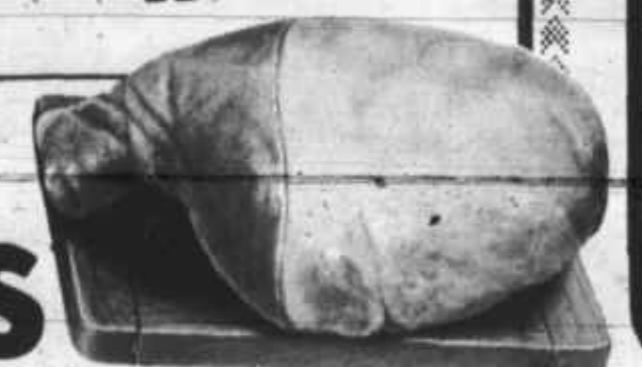


BABY BEEF
CHUCK ROAST



\$1.80
LB.

DECKER WHOLE
PICNICS



\$1.09
LB.

CALF LIVER



FRESH
89¢
LB.

BABY BEEF
CHUCK STEAK

LB. **\$1.85**

BABY BEEF
RIB CHOPS

LB. **\$2.39**

BABY BEEF
CROWN ROAST

LB. **\$1.89**

BABY BEEF
RIB EYE STEAK

LB. **\$3.95**

FRESH GROUND
HAMBURGER MEAT

LB. **\$1.89**

RIND OFF
MARKET
MACHINE SLICED
BACON

LB. **\$2.80**

FAMILY PRIDE
TURKEY HENS

8-10 LB. AVG.

89¢
LB.

dairy

SOFT
MEADOWLAKE

OLEO

1 LB. TUB

59¢

LILLY 2% BUTTERFAT

MILK

PLASTIC GAL. **\$2.19**

LILLY
COTTAGE CHEESE

1 LB. CTN.

\$1.19

PRODUCE
BAG
POTATOES

8 LB. CELLO BAG **89¢**

SPINACH

CELLO BAG **69¢**

CELERY

STALK **33¢**

CARROTS

CELLO BAG **25¢**

FRESH LOUISIANA
YAMS

LB. **25¢**

GRAPEFRUIT or ORANGES 5 LB. BAG **99¢**

Wilcox

MINIMAX

200 S. McCarty, Eagle Lake, Texas

A COMPLETE FOOD MARKET
PHONE 234-2515

WE RESERVE THE RIGHT TO LIMIT QUANTITIES

SUPPLEMENT TO THE EAGLE LAKE HEADLIGHT

Shop Your Minimax Today And Save!

PRICES IN EFFECT THURS.-WED. FEB. 3-9, 1983

FOR ALL YOUR COOKING NEEDS
Good Value Sugar

\$1.39
5 LB. BAG

Good Value Vegetables

15% OZ. CUT GREEN BEANS, 16 OZ. CREAM STYLE CORN, WHOLE KERNEL CORN, OR SWEET PEAS

3 \$1
CANS FOR



Pot Pies

CHICKEN, TURKEY, BEEF OR MAC & CHEESE

3 \$1
8 OZ. PKGS. FOR



GOOD VALUE
Quarters Margarine

3 \$1
1 LB. PKGS. FOR

FOR ALL YOUR BAKING NEEDS
Good Value Flour

.69
5 LB. BAG



NABISCO
Ritz Crackers

12 OZ. PKG. **\$1.19**

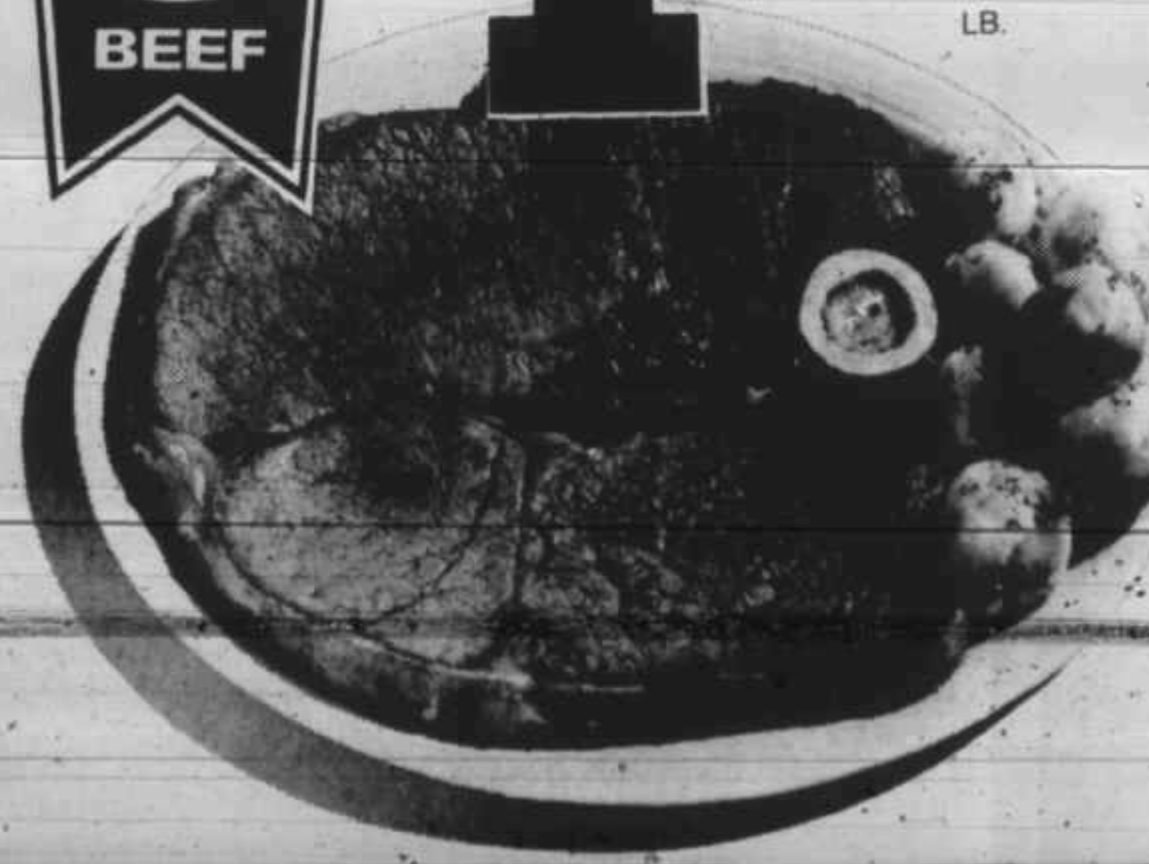
MAGIC FLAKE REGULAR OR WAVY
Potato Chips

8 OZ. PKG. **.79**

YOUR SAVINGS WILL STACK-UP DURING OUR
STORE BRANDS STOCK-UP SALE

USDA CHOICE P.S. BEEF
Round Steak

\$1.69
LB.



GOLDEN RIPE
Dole Bananas

4 \$1
LBS. FOR

CALIFORNIA
Iceberg Lettuce

.39
HEAD

Check Inside For More Super Savings From Your Minimax Supermarket!

30c
or Copy

(5163760)

al

ward Wiese, fifth place hog, \$3.30, of \$5.
fifth place \$1.10; K. Kretschmer, avy weight Lang; John ce Brahman Leo Korenek bert Faslu, wford Steer, mith.

rants and for, \$2.30, ers, Kenneth Hlavinka's; \$1.80, Eagle nent; Mike 00, United ny Lewis, es Farm; ne; \$1.05, tor; Gary Columbus apply; Glen P. V. Ranch, ner, \$2.50, al Bank of

ven, \$1.10, se; Rodney LT Ranch, rya; \$1.05, al Bank of Brett Ward.

Page 4

here

mpression of urgent con- denying the Greyhound r. at least, to ster hearing areas so that arries might to present se aforem- s, along with opted by the at Tuesday ng, is being y represe- ie City and se hearing in

ale

n Eagle Lake ds from the l be used to collection of Wapetians raining" to lib, cultural aldesvors.